

# You Could See A Line

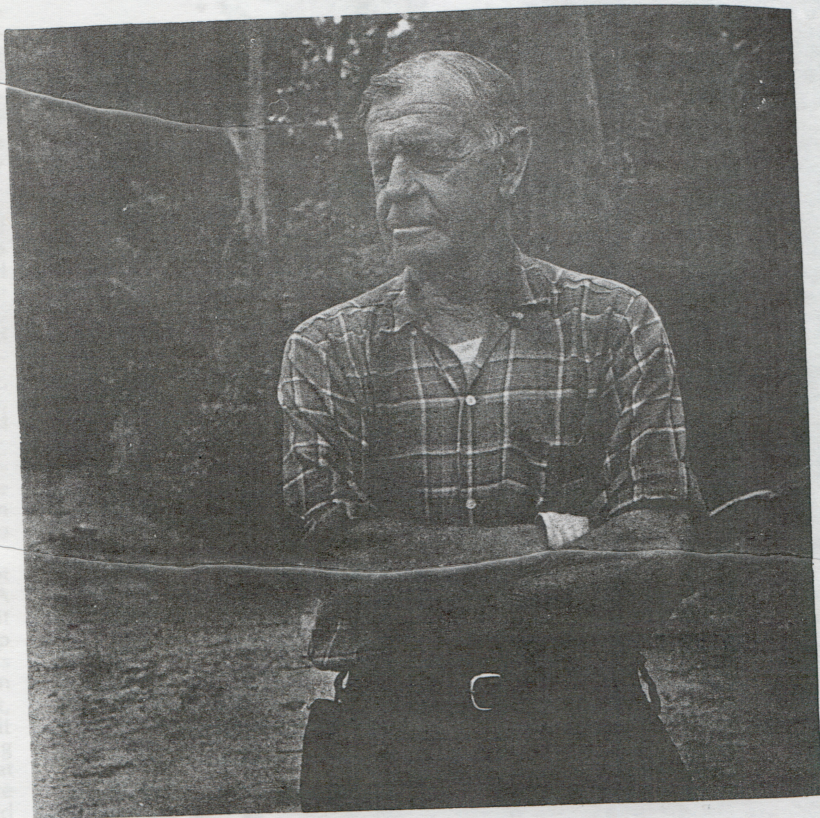
Written by  
Tom Lutz  
Dale Wright

Photography by  
Dawson Spano  
Peter Fait

"Where (the Nissitissit River) opens into the Nashua River, we went there one day, down past Pepperell and you could see a line. On the other side of the line was all kind of grey looking water and where the Nissitissit came in it was black clear water. You could see the line of the difference. We did not have a camera. We never got a picture. Which is too bad."

— Jeff Smith

Deriving its name from an Indian word meaning "two brooks" or "between brooks", the Nissitissit River is one of the cleanest rivers in southern New Hampshire. It starts at Lake Potanipo in Brookline, New Hampshire and ends in Pepperell, Massachusetts where it runs into the dirty water of the Nashua River. The Nissitissit, about 9½ miles long, is in an undeveloped natural state its total length. We talked to three men who have been involved with the river for many years.



Above: Jeff Smith of Hollis, N.H.

Right: Jeff Smith, Trescott Abele and Dale Wright talking about the river.