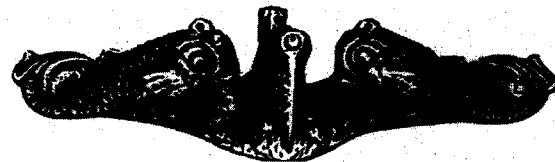


ST. MARYS SUBMARINE MUSEUM, INC.

102 St. Marys Street West
St. Marys, GA 31558-4945



Boston Scientific Corp
One Boston Scientific PL
Natick, MA 01760-1537


28 June 2006
2000-100

Dear Mr. John Abele,

I wish to introduce myself. I'm the museum manager for the St. Marys Submarine Museum, located in St. Marys, GA. I spent 22 years in the Navy on Submarines, and work with many of the WWII subvets who visit our museum. I've always enjoyed learning more about them and what they did on the boats. Our museum has a pretty good set of files on all of the American submarines. We have assisted other individuals and organization by making copies of what we have on the boat or topic requested. Some are just looking for information on a relative or the fate of the submarine. Think you are the first looking to find his dad's boat, which is a first for me. Read the Grunion news article that was published by Daniel Black, about your quest to locate the boat. I hope you are successful. A sport diver just last year found the sunken USS Lagarto in the Far East, and just confirmed by the Navy a couple of weeks ago. University of Hawaii recently found a sunken Japanese submarine off of Oahu during one of their dives. We sent them a lot of info a couple of months ago about the boat they found off of Hawaii.

Don't believe any of the information provided will provide the location of the boat, but it might provide you some information you have not obtained from other sources. The CD should mainly be scanned photos we have in the museum. The xeroxed War Diary's, are the reports, from training patrols a submarine does prior to conducting a formal War Patrol.

Again I hope you are successful in locating your father's submarine. Listening to the stories of the Lagarto members, and visitors here in the museum, this can bring a sense of closure to their loss during WWII. I imagine you have already contacted the Naval Archives for information, but have you contacted the official Submarine Museum in Groton, CT or the Bowfin Submarine Museum in Pearl Harbor? They may have some addition information.


John Crouse

