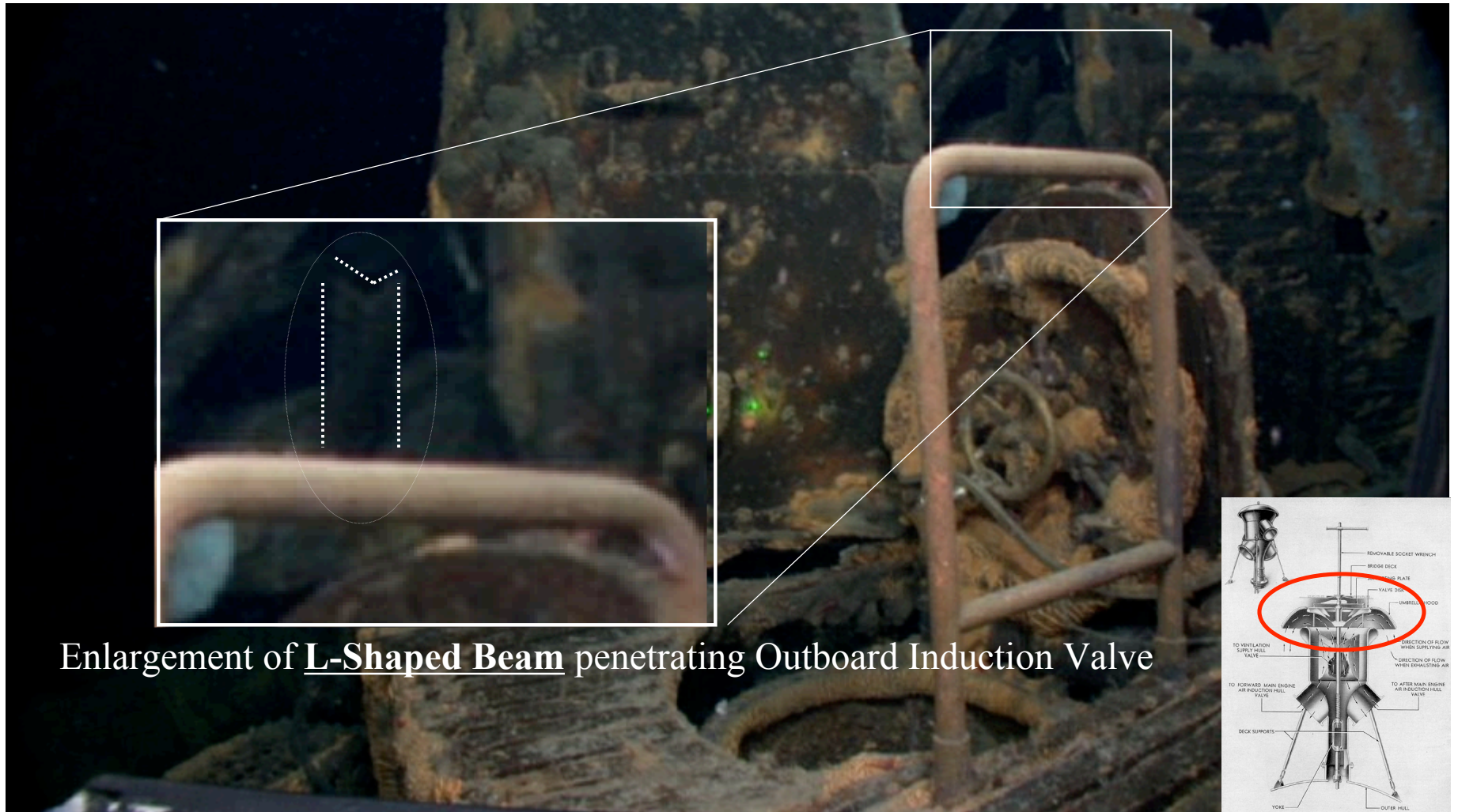


View: Port side, Amidships. Looking at Grunion Sail

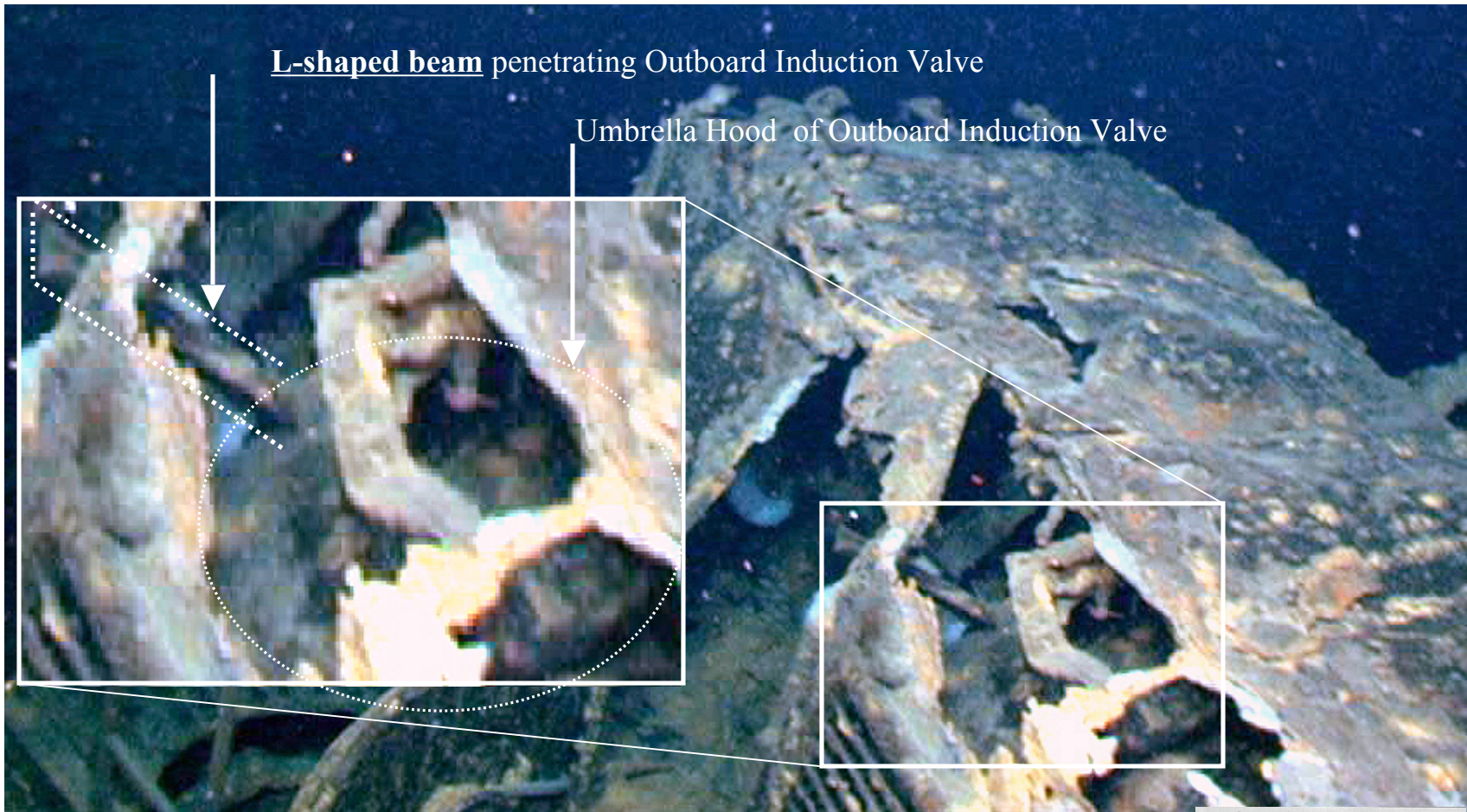


Source: <http://picasaweb.google.com/mbrewsterabele/AttackAnalysis42ndSighting/photo#5116030009430213122>

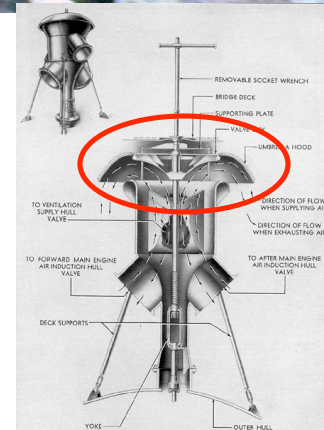


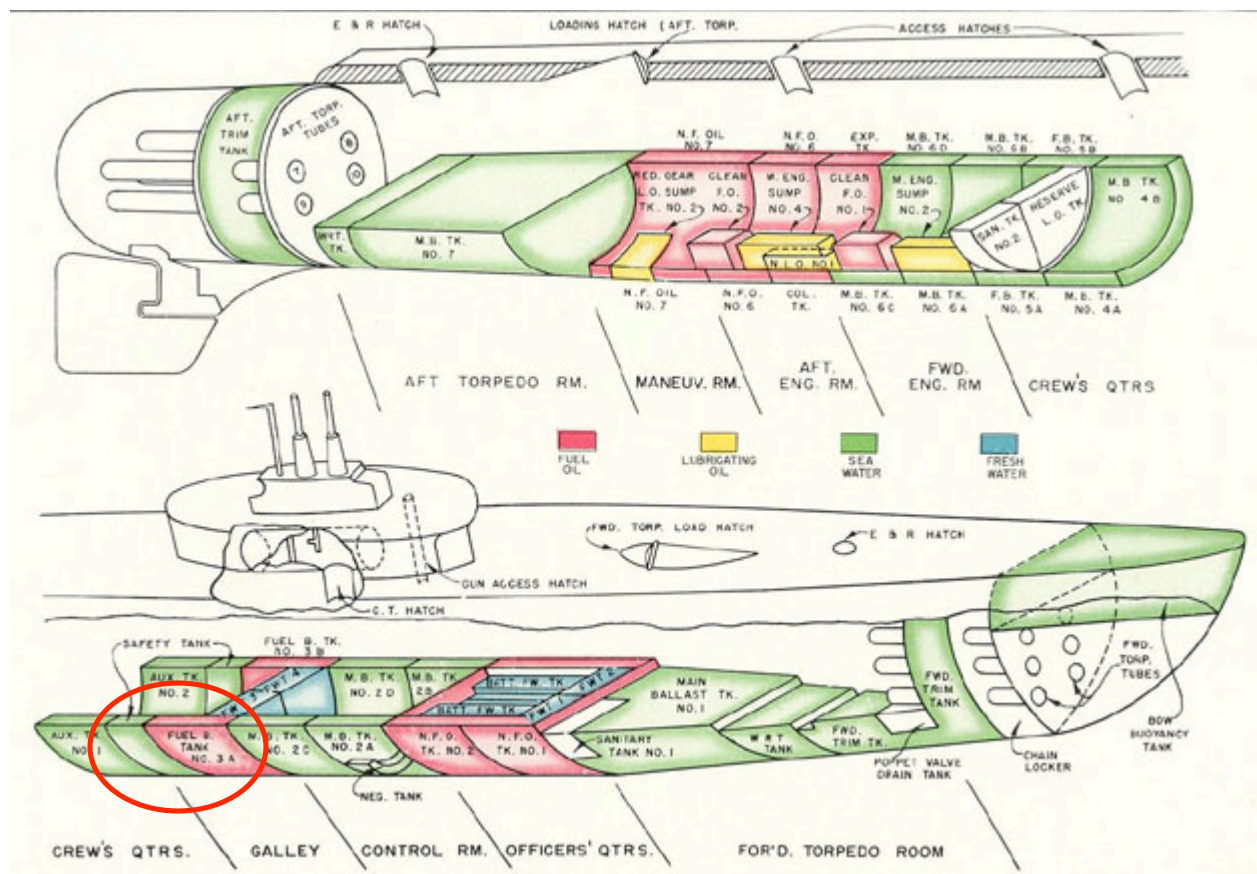
Enlargement of L-Shaped Beam penetrating Outboard Induction Valve

Amidships; starboard side, looking to port; Camera is outboard of open After Battery Hatch source: Attack Analysis 2, open hatch 16, photo#5115765628423339762

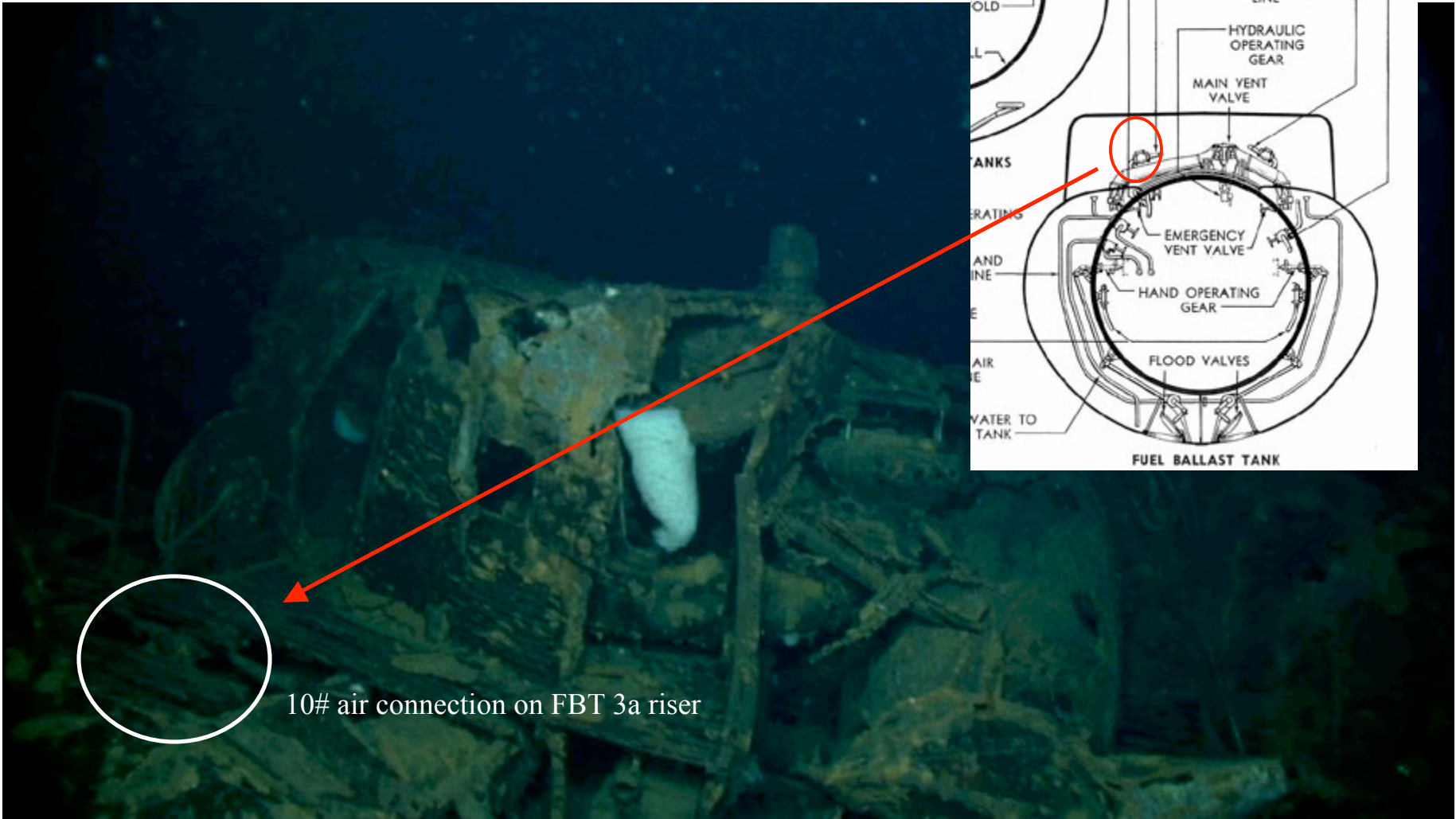


Amidships, starboard side. ROV is on starboard side of Conning Tower Fairwater facing port and aft. Source: Black 04 01:34:28:16



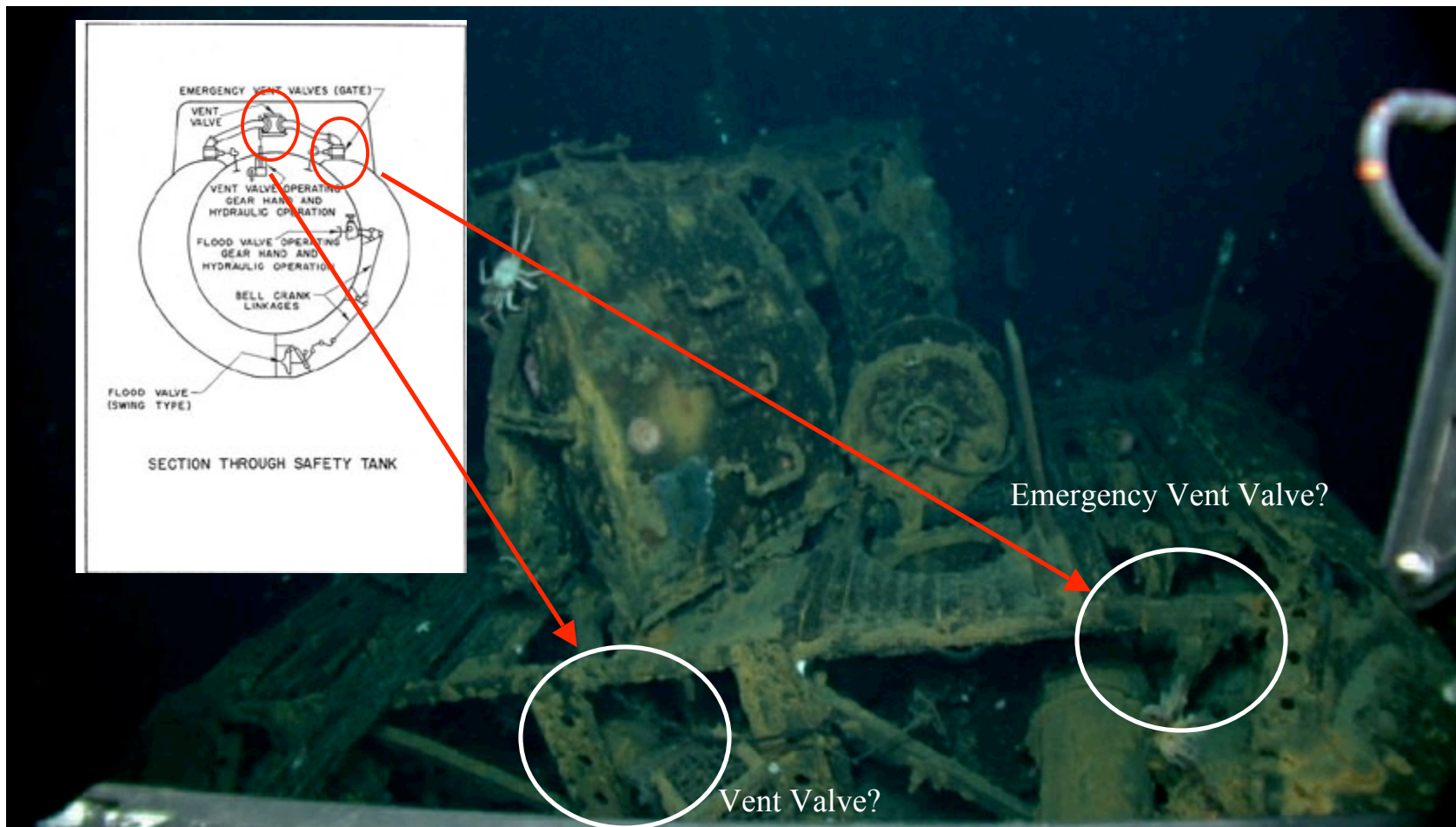


Location of Safety and FBT #3a, 3b Relative to Conning Tower Fairwater



10# air connection on FBT 3a riser

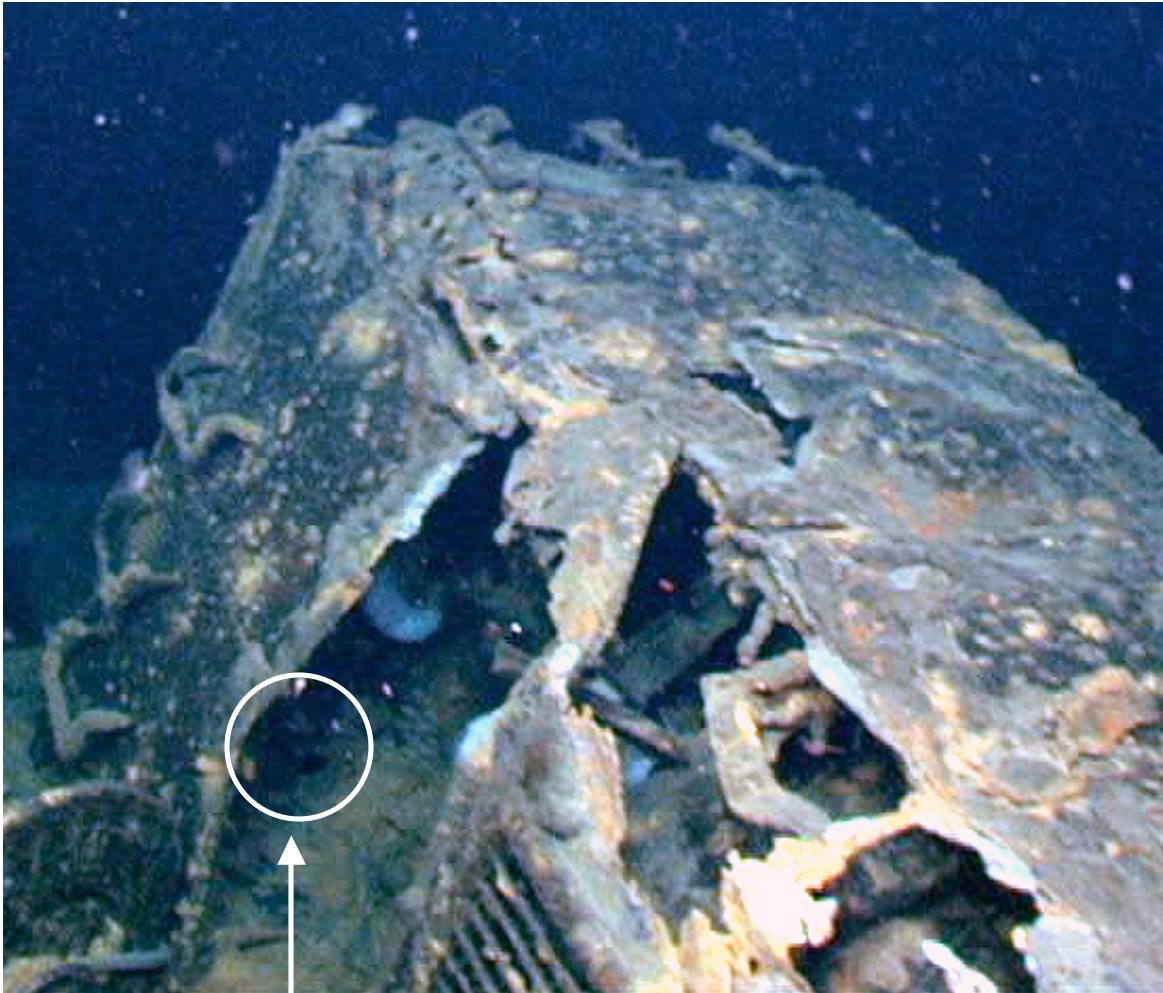
Possible Fuel Ballast Tank 3 Vent Riser and 10# air connection
source: attack analysis 2: Open hatch 22



Possible **Safety Tank** Vent Riser, Vent, and Emergency Vent Valves.

Is there damage?

source: attack analysis 2: Open hatch 23



Possible shell damage / hole in deck in aft Conning Tower Fairwater

source: Black 04: 01:34:28:16